

HOMSO 雄塑®



MEETS ANSI/ UL651

PVC Rigid Conduit

SCH40 & SCH80

www.homsopipe.com



CONTENTS

1. PRODUCT DESCRIPTION
2. SHORT FORM SPECIFICATION
3. DIMENSIONW AND WEIGHT

HOMSO 雄塑®

PVC RIGID Non-Metallic Conduit for Electrical Systems

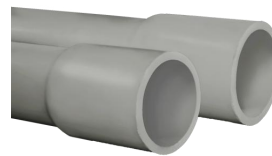
Schedule 40 and Schedule 80

PRODUCT DESCRIPTION

ELECTRICAL CONDUIT

FOR USE IN POWER, TELEPHONE AND OTHER ELECTRICAL DUCT SYSTEMS

HOMSO PIPE offers a complete line of rigid PVC conduit and duct. For commercial, industrial and utility usage, HOMSO PVC conduit and duct is proven durable and effective for years of maintenance-free performance in underground, encased and exposed applications in accordance with the Electrical Code in the USA.



HOMSO'S PVC RIGID CONDUITS ADVANTAGES

Corrosion Proof

Resistant to most chemicals, PVC is typically not affected by corrosive soils or salts.

Non-Magnetic and Non-Galvanic

Properties of HOMSO PVC Conduit provide good insulation and no power loss or conductor heating.

Self-Extinguishing

Properties make PVC fire resistant.

Impact Resistant

Tough, durable, with high tensile strength, yet easy to handle and install right on the jobsite.



Quality Control IN HOMSO PIPE

HOMSO pipe is tested in accordance with the provisions of the appropriate listed standard(s) and subject to inspection by its quality control inspectors throughout the manufacturing process. HOMSO 's Quality Management System is ISO 9001:2000 registered.



Applications

HOMSO Schedule 40 & 80 rigid PVC conduit systems are sunlight resistant and are used exposed, encased in concrete, concealed in walls and in direct burial applications including systems for:

Utilities

Cable, data and communication lines

Institutional, commercial, industrial buildings

Residential applications, & service entrances

Street and highway underground feeds

Transportation systems – subways, bridges, tunnels, airports

Water and wastewater treatment plants

Marinas

Mines and mills



HOMSO Schedule 40 and Schedule 80 Conduit's Data Sheet

HOMSO's Schedule 40 and Schedule 80 PVC rigid nonmetallic conduit is designed and produced for use in both above-ground and underground installations.

- Highest quality control standards.
- Rated for use with 90 ° C conductors.
- Light weight and easy installation.
- Ultraviolet protection.
- High impact and deformation properties.
- Solvent cemented joints.
- Superior dielectric strength.
- Smooth solid wall.

HOMSO PVC Schedule 40 and 80 conduit is manufactured in accordance with the following specifications:

- **ANSI/UL 651**
- **NEMA TC-2**

Mechanical Properties		Thermal Properties	
Item	Typical value	Item	Typical value
Specific Gravity	1.4 - 1.7	Coefficient of Thermal Expansion -in /in/ ° C	5.13 x 10-5
Tensile Strength (psi) @ 73.4 ° F	5,000	Coefficient of Thermal Expansion -in /in / ° F	3.0 x 10-5
Izod Impact -ft lbs /in of notch	0.65 - 1.50	Deflection Temp. ° F Under Load @ 264 psi	140 ° F
Flexural Strength (psi)	12,500	Thermal Conductivity BTU (hr) (ft) (° F/in)	1.3
Comprehensive Strength (psi)	9,000		
Hardness (Durometer D)	95		

Electrical Properties		Fire Resistance Properties	
Item	Typical value	Item	Typical value
Dielectric Strength - volts/mil	1100	Fire Resistance	Self Extinguishing
Dielectric Constant 60 CPS @ 30 ° C	4	Flame Spread	10
Power Factor 60 CPS @ 30 ° C	1.93	Smoke Development	330

Dimensions and Weights

HOMSO Schedule 40 and Schedule 80 Conduit NEMA TC-2 and ANSI/UL 651

RIGID NON-METALLIC CONDUIT FOR USE IN BOTH ABOVE GROUND AND UNDERGROUND INSTALLATIONS

SCHEDULE 40 CONDUIT

SIZE	Average O.D.	NOM.I.D	MIN.T.	APPROX.WT/100FT
1/2	0.840	0.622	0.109	18
3/4	1.050	0.824	0.113	24
1	1.315	1.049	0.133	33
1 1/4	1.660	1.380	0.140	45
1 1/2	1.990	1.610	0.145	56
2	2.375	2.067	0.154	76
2 1/2	2.875	2.469	0.203	126
3	3.500	3.068	0.213	163
3 1/2	4.000	3.548	0.226	197
4	4.500	4.026	0.237	234
5	5.563	5.047	0.258	319
6	6.625	6.065	0.280	411
8	8.625	7.942	0.322	622

Schedule 40 is furnished in standard 10' lengths with one bell end.

20' lengths are available upon request.

SCHEDULE 80 CONDUIT

SIZE	Average O.D.	NOM.I.D	MIN.T.	APPROX.WT/100FT
1/2	0.840	0.546	0.147	22
3/4	1.050	0.742	0.154	30
1	1.315	0.957	0.179	42
1 1/4	1.660	1.278	0.191	60
1 1/2	1.990	1.500	0.200	72
2	2.375	1.939	0.218	98
2 1/2	2.875	2.323	0.276	160
3	3.500	2.900	0.300	213

3 1/2	4.000	3.364	0.318	256
4	4.500	3.826	0.337	310
5	5.563	4.813	0.375	430
6	6.625	5.761	0.432	590

Schedule 80 is furnished in standard 10' lengths with one bell end.

20' lengths are available upon request.